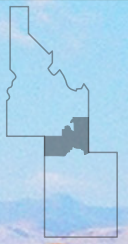


# Agricultural Tour

www.bearriverheritage.com



## BEAR RIVER HERITAGE AREA

*Blessed by Water Worked by Hand*

In the Bear River Heritage Area (BRHA), ranching and agriculture are still primary occupations that sustain a rich agricultural heritage. Historically, early Shoshone Indians hunted plentiful wild game, gathered seeds and berries and farmed in small amounts. In the 19th century, Mormon settlers developed the Bear River and its tributaries to increase agriculture. Agriculture brought in new cultural groups with their traditions and celebrations, including Japanese-Americans, Latinos, Asians and Eastern Europeans. This tour highlights a rich agricultural heritage based on traditions of ranching, dry farming, orchards, home gardening and canning; and businesses that support agriculture such as irrigation and farm supply stores, equipment dealers and fairgrounds.

### Agricultural Tour stops - see corresponding map (back).



Fresh Peaches at Fruitway Market - Utah



Elsa at Rockhill Creamery - Richmond, Utah



Hans Sorenson Grain Bins - Soda Springs, Idaho



Last Chance Dam - Grace, Idaho

**1 - Box C Ranch** Working cattle ranch you can participate in cattle drives, roping and branding, horseback riding and training colts. Situated in the northwest corner of Utah on Grouse Creek Road, 4 miles north of the Grouse Creek store. 866.779.2105, [www.boxcranch.com](http://www.boxcranch.com)

**2 - Paradise Valley Orchard** Fresh apples, unpasteurized cider, pears, pumpkins, squash. Location: 9971 South Hwy. 165 Paradise, Utah. 435.245.6203, [www.pvorchard.blogspot.com](http://www.pvorchard.blogspot.com)

**3 - Zollingers Fruit & Tree Farm** Apples and fresh-pressed cider, melons, fall pumpkins and squash, trees and shrubs. Location: 1000 River Heights Road, River Heights, Utah. 435.787.1867, [www.zollingerfarm.com](http://www.zollingerfarm.com)

**4 - Cache Valley Gardeners Market** An open-air market of local produce, handmade crafts and treats. Location: Merlin Olsen Park, 100 S 200 E, Logan, Utah. Saturdays 9am-1pm, May-October. 435.755.3950, [www.gardenersmarket.org](http://www.gardenersmarket.org)

**5 - Cox Honeyland** Founded in 1929, offers famous Utah honey and gourmet food products. Educational information and observation hive. Location: 1780 South Hwy 89/91, Logan, Utah. 800.877.1489, 435.752.3234, [www.coxhoney.com](http://www.coxhoney.com)

**6 - Gossner Foods** Specializing in fine Swiss cheeses and other favorites. Pioneered development of shelf-stable milk with Utah State University. Location: 1000 North 1000 West Hours in Logan, Utah. Monday-Saturday, 8am-6pm, 435.713.6104, [www.gossner.com](http://www.gossner.com)

**7 - Smithfield Livestock Auction** Farmers, ranchers and buyers converge here where cattle, sheep and other livestock are sold. Visit the auction, or stop into the café for a burger and soft drink. Location: 711 South 100 West in Smithfield, Utah, Thursdays, 10am. 435.563.3259

**8 - Smithfield Implement** Farm and ranch supply business founded in 1914. Purchase Dutch ovens,

cowboy hats, blue jeans and hardware. Location: 99 North Main Street, Smithfield, Utah. Monday-Saturday, 435.563.3211

**9 - Rockhill Creamery** Farmstead cheeses made from milk produced by their five Brown Swiss Cows. Location: 563 South State Street, Richmond, Utah. Richmond's Harvest Market at Rockhill hosted here Saturdays, 10am-2pm, late May-October. 435.258.1278, [www.rockhillcheese.com](http://www.rockhillcheese.com)

**10 - Dragongoose Farm & Apple Cider** Apples and fresh cider in the fall. Other times of the year visit the historic home, Champion Box Elder Tree, rose and flower garden. Location: West of Richmond via 11600 N. Look for Shaw Lane on your left before the crest of the hill. Call before you visit. 435.258.2702, [www.dragongoose.com](http://www.dragongoose.com)

**11 - Bear Lake Raspberries** Enjoy a famous raspberry shake overlooking Bear Lake. Visit a local raspberry farm or roadside stand where you can purchase these early fall fruits. **Bob's Bear Lake Berries** - 61 West 200 South, Laketown, 435.946.3384; **Chad's Raspberry Kitchen** - 150 East Center, Laketown, 435.946.3453; **Calder's Bear Lake Raspberries** - 435.946.8863; **Early Farm** - 1749 SW Round Valley Drive, near Laketown, 435.757.1463

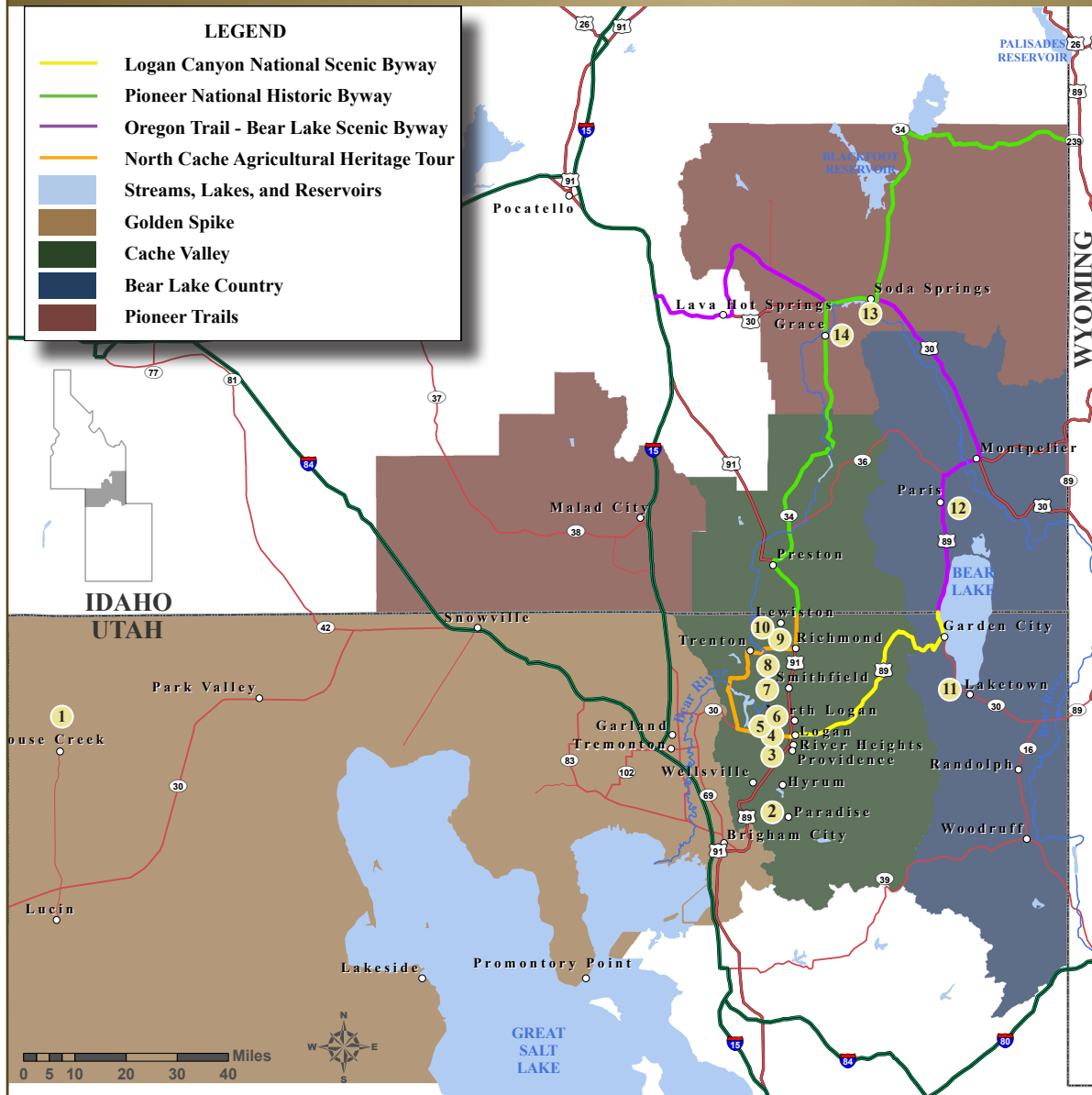
**12 - Paris Springs Organic Self-Serve Farm** Organic lettuce and garlic. Location: 220 South Main Street, Paris, Idaho. Mid-summer through fall, 435.901.9131

**13 - Bar H Bar Ranch** Work along with cowboys calving, branding, doctoring, fixing fence, irrigating, putting up hay or just take a nature hike. Location: 1501 Eight Mile Creek Road, Soda Springs, Idaho. 800.743.9505, [www.barhbar.com](http://www.barhbar.com)

**14 - Last Chance Canal** Built by farmers desperately seeking Bear River water for their crops. Location: Last Chance Lane, north end of Grace, Idaho, east side of Highway 34. [www.pioneerhistoricbyway.org](http://www.pioneerhistoricbyway.org)

### LEGEND

- Logan Canyon National Scenic Byway
- Pioneer National Historic Byway
- Oregon Trail - Bear Lake Scenic Byway
- North Cache Agricultural Heritage Tour
- Streams, Lakes, and Reservoirs
- Golden Spike
- Cache Valley
- Bear Lake Country
- Pioneer Trails



## County Fairs

- Bear Lake County Fair**  
4th week in August  
Montpelier, Idaho 208.945.2072
- Caribou County Fair**  
Last weekend, July  
Grace, Idaho 208.574.2244
- Franklin County Fair**  
3rd weekend, August  
Preston, Idaho 208.852.0178
- Oneida County Fair**  
2nd weekend, August  
Malad, Idaho 208.766.4116
- Box Elder County Fair**  
4th weekend in August  
Tremonton, Utah 435.279.8267
- Cache County Fair**  
2nd week in August  
Logan, Utah 435.755.1460
- Rich County Fair**  
2nd week in August  
Randolph, Utah 435.793.3323  
or 435.881.4534



*Or visit us online at*  
[www.bearriverheritage.com](http://www.bearriverheritage.com)

## Agricultural Celebrations

- American West Heritage Center, Wellsville, Utah**  
Various heritage events year 'round  
435.245.6050, [www.awhc.org](http://www.awhc.org)
- National Oregon Trail Center, Montpelier, Idaho**  
Various heritage events year'round  
866.847.3800  
[www.oregontrailcenter.org](http://www.oregontrailcenter.org)
- Bear Lake Raspberry Days, Garden City, Utah**  
1st weekend in August  
800.946.2197, [www.bearlake.org](http://www.bearlake.org)
- Peach Days, Brigham City, Utah**  
1st weekend after Labor Day  
435.723.3931  
[www.bcareachamber.com](http://www.bcareachamber.com)
- Wheat & Beet Days, Garland, Utah**  
1st weekend of August 435.257.3118  
[www.garlandutah.org](http://www.garlandutah.org)
- North Logan Pumpkin Walk, Utah**  
Mid-October 435.752.1310  
[www.ci.north-logan.ut.us](http://www.ci.north-logan.ut.us)
- Trout & Berry Days, Paradise, Utah**  
Weekend before Labor Day  
435.245.6737  
[www.paradise.utah.gov](http://www.paradise.utah.gov)
- Sauerkraut Dinner, Providence, Utah**  
Mid-October 435.752.9441  
[www.providencecity.com](http://www.providencecity.com)
- Black & White Days, Richmond, Utah**  
Mid-May 435.258.2092  
[www.richmond-utah.com](http://www.richmond-utah.com)
- Apple Days, River Heights, Utah**  
September 435.752.2646  
[www.riverheights.org](http://www.riverheights.org)
- Wool Trek Days, Trenton, Utah**  
First weekend in May 435.258.5539
- Black Gold Cattle Co. Testicle Festival, Woodruff, Utah**  
Memorial Day weekend  
435.757.4962

*Contact the Bear River Heritage Area at 435.713.1426*

## Roadside Vendors

**Fruit Way** Roadside stands sell seasonal fruits and vegetables, located south of Brigham City, on Highway 89 between Perry & Willard, Utah. Along Hwy 89-91 south of Logan and in Logan Canyon watch for raspberries, currants and beef jerky. In late summer and fall, look for pumpkin patches, corn mazes and local produce stands along main roads throughout the Heritage Area.

## Abandoned Buildings

**Abandoned Buildings** Look for buildings that were once so pivotal to local agriculture. **Brigham City Mormon Co-Op Buildings** included The Planing Mill, 575 East Forest and Woolen Mills, 56 N 500 E Brigham City, Utah; **Condensed milk processing plants**, 300 S 400 W, Logan, Utah and **Sego milk plant**, look for the tall smokestack west of Hwy 89/91 in Richmond, Utah; **Morgan Pea Factory**, brick building on the west side of Hwy 91, Smithfield, Utah, with the original name sculpted into the masonry; **Sugar beet factory**, west side of Hwy 91 as you enter Preston, Idaho; **Potato cellars**, gabled or Quonset earth-banked buildings, Hwy 34, Grace, Idaho; **Hans Sorensen grain bins**, twenty foot high hexagonal wooden bins, 80 S 100 E, Soda Springs, Idaho.

**GOLDEN SPIKE**

**CACHE VALLEY**

**BEAR LAKE COUNTRY**

**PIONEER TRAILS**